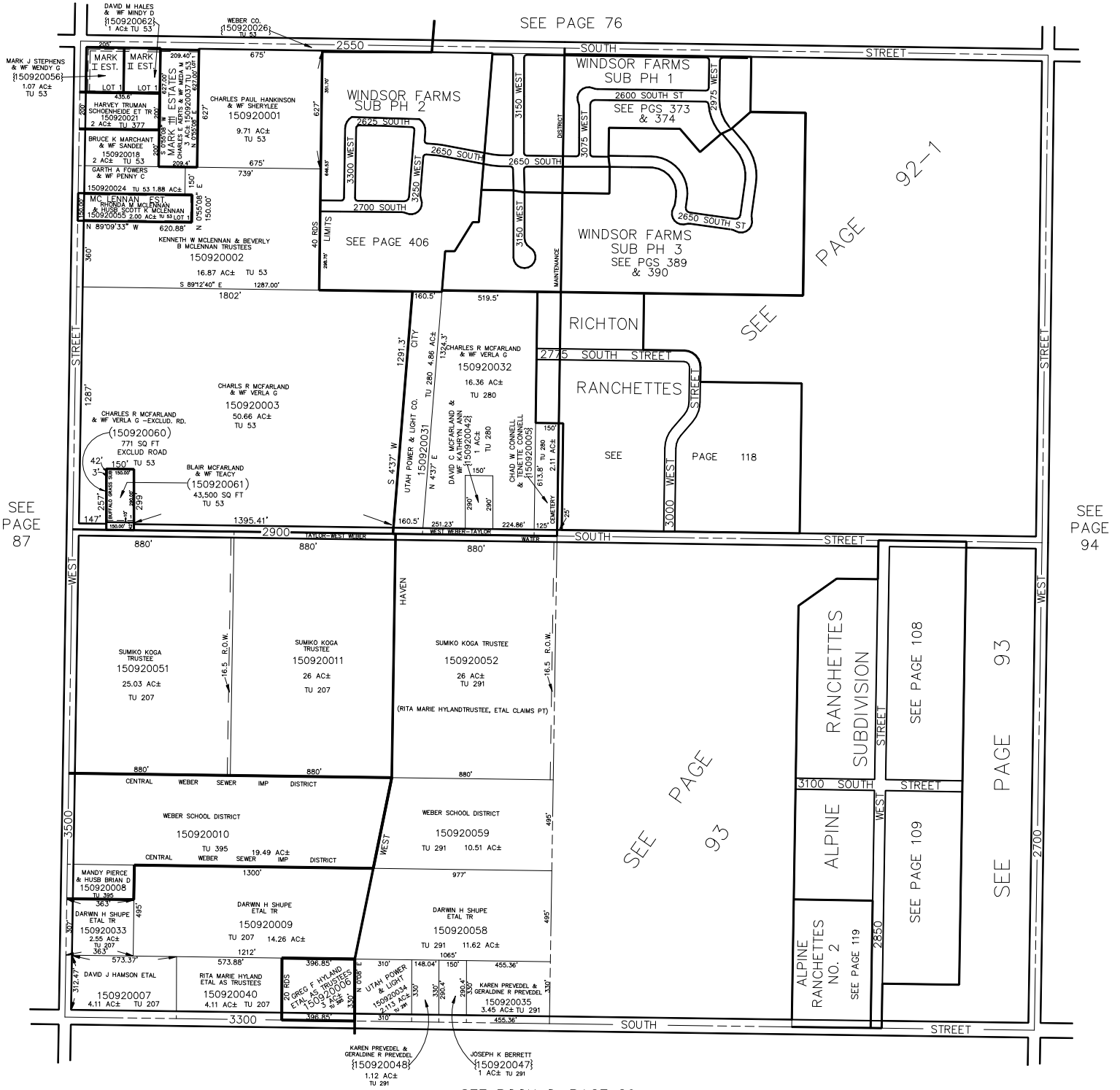


SECTION 34, T.6N., R.2W., S.L.B. & M.

IN WEST HAVEN CITY & WEBER COUNTY

TAXING UNIT: 53, 207, 280, 291, 377, 395, 421

SCALE 1" = 400'



SEE PAGE 76

SEE PAGE 406

SEE

PAGE 92-1

SEE

SEE

PAGE 93

SEE PAGE 94

SEE PAGE 87

SEE PAGE 93

SEE PAGE 108

SEE PAGE 109

SEE PAGE 119

KAREN PREVEDEL & CERALDINE R PREVEDEL
150920048
1.12 AC±
TU 291

JOSEPH K BERRETT
150920047
1 AC±
TU 291

SEE BOOK 8, PAGE 29